



A YMCA FOR US

A Campaign for Our Future Flagship YMCA

YMCA of the Palm Beaches
2728 Lake Worth Road, Lake Worth, FL 33461
561.508.4028
slanglais@ymcapalmbeaches.org
ymcapalmbeaches.org

PROJECT OVERVIEW

The YMCA of the Palm Beaches has been presented with a historic opportunity to partner with Palm Beach County to relocate and expand its flagship branch. This brand-new facility will be located adjacent to Palm Beach County's new and expanded aquatic center at Lake Lytal Park. In 2021, the Palm Beach County Board of Commissioners unanimously voted to approve a 50-year ground lease to the YMCA of the Palm Beaches, allowing us to build a state-of-the-art community center and Olympic-style skate park next to the County's new aquatic facility, which the Y will manage all programmatic activity for. This public private partnership replicates a successful model, through which other YMCA associations have worked together with municipalities, to provide programs and services that are run efficiently and serve all in need in their communities.

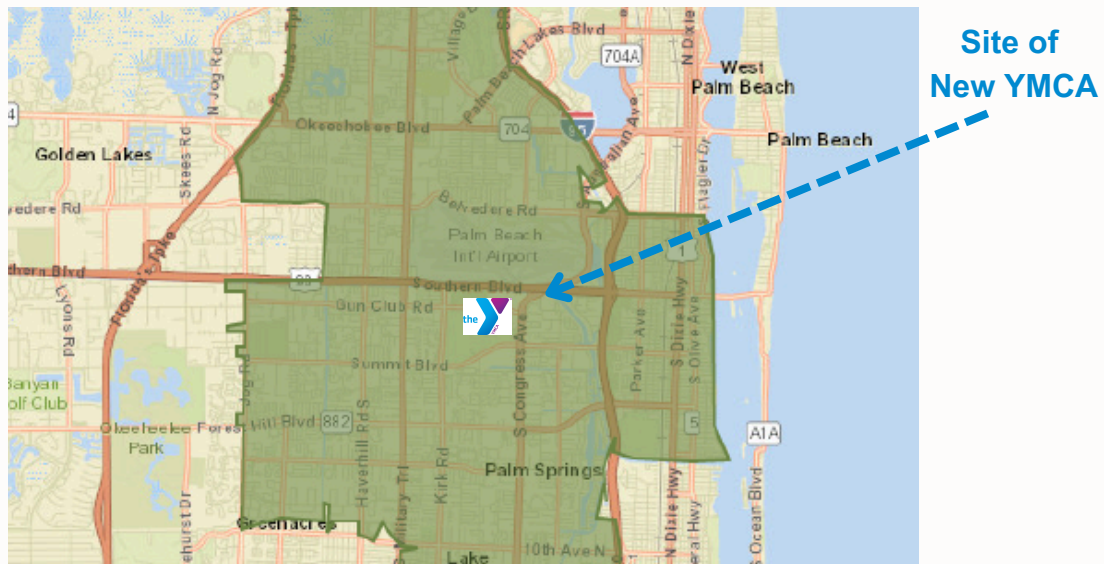
The YMCA's cause is to strengthen community. This collaborative community hub at Lake Lytal Park will be a true destination for all families in Palm Beach County and a model for collaboration across the nation.



A YMCA FOR US

LOCATION & DEMOGRAPHICS

Several market studies and community outreach sessions have indicated that the missing amenity in Central Palm Beach County is a Community Center that can provide child care, youth programs, teen mentoring, indoor recreation, high quality wellness programming, and accessible community space.



Key Facts



136,160

Population



0.3%

Population: Annual Growth Rate (2022-2027)



48,246

Households



\$55,396

Median Household Income

Ability



10,752

Households With Disability



87.5

Diversity Index

0 (No Diversity)
100 (Complete Diversity)

Population Characteristics



30%

Make Sure I Exercise Regularly



12%

Actively Seek Info on Nutrition/Healthy Diet



5.5%

Unemployment Rate



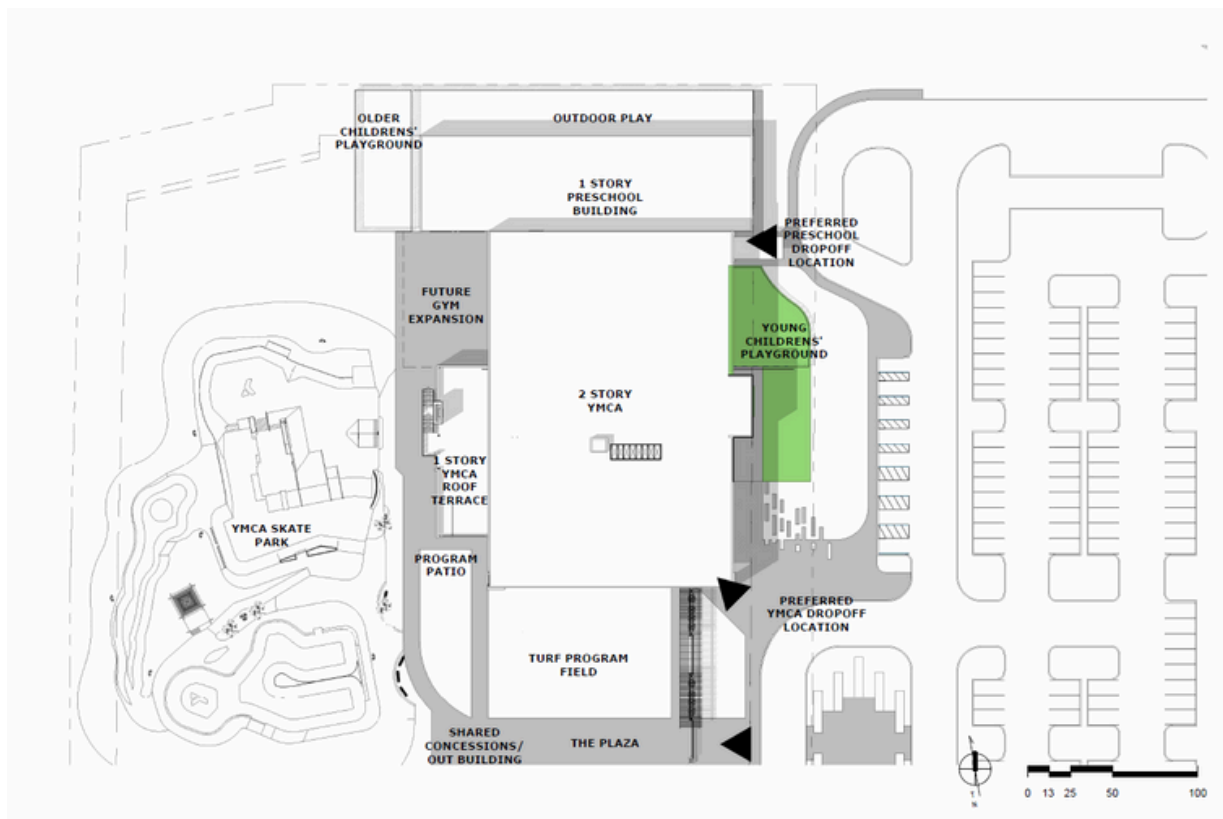
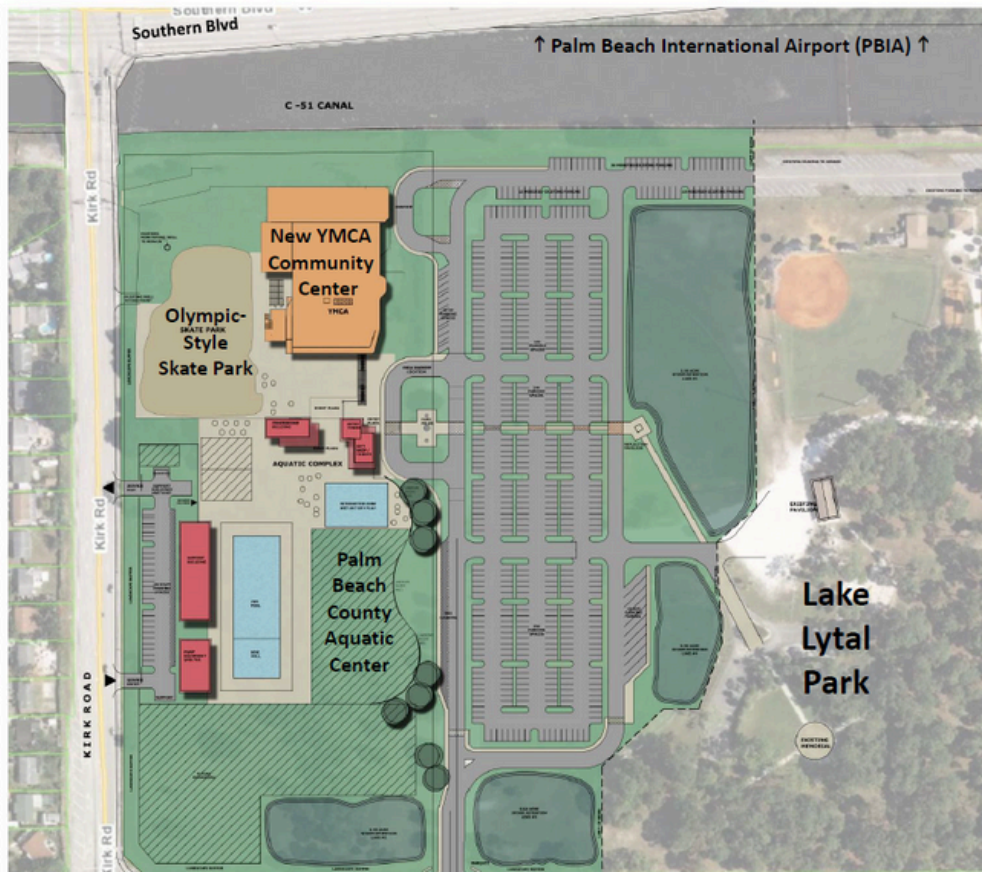
16%

Households Below the Poverty Level (ACS 2017-2021)

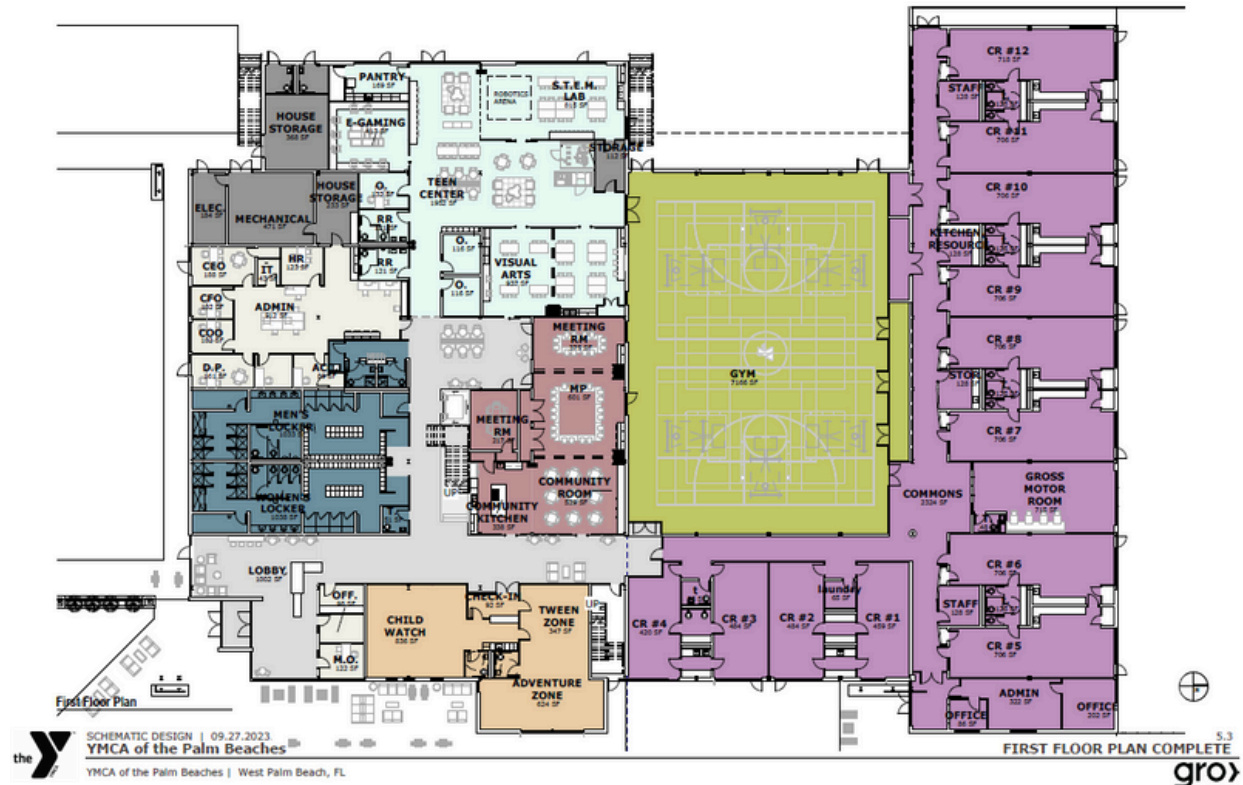


Demographics based on a 3-mile radius of the future YMCA at Lake Lytal Park.

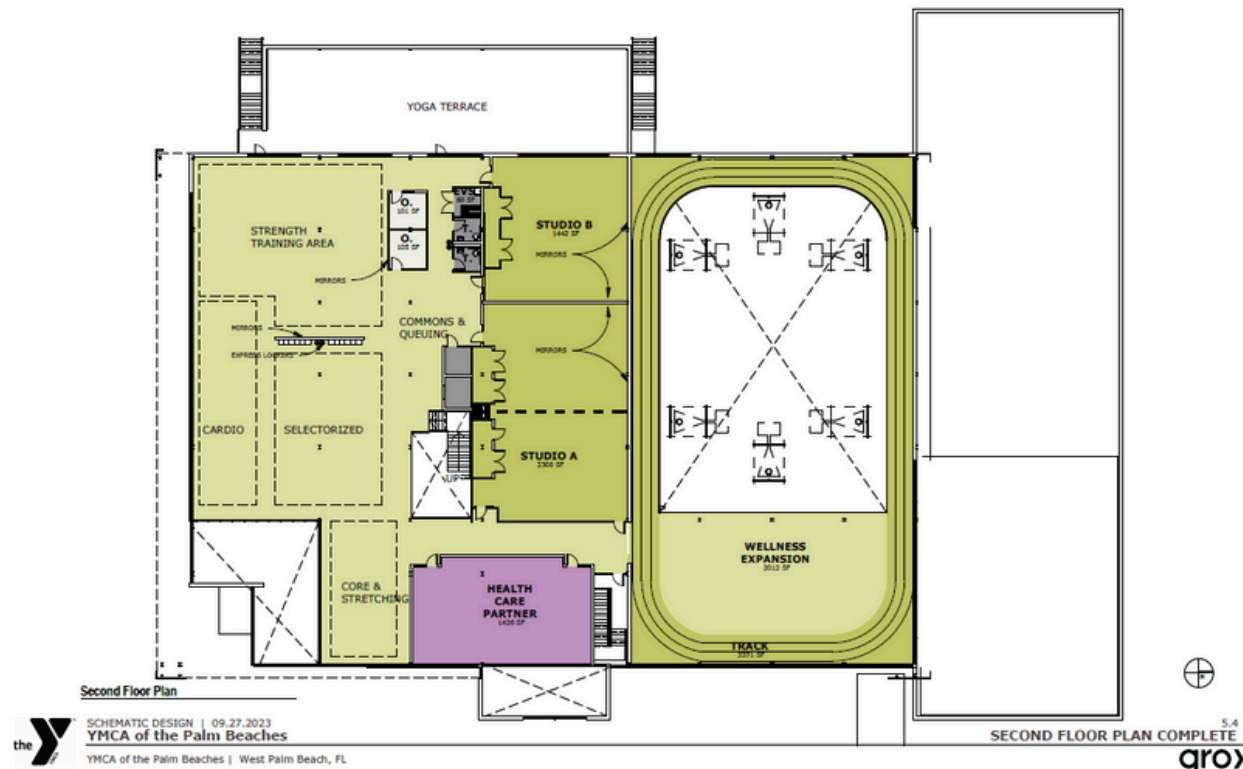
PROPOSED SITE PLANS



PROPOSED FLOOR PLANS



FIRST FLOOR



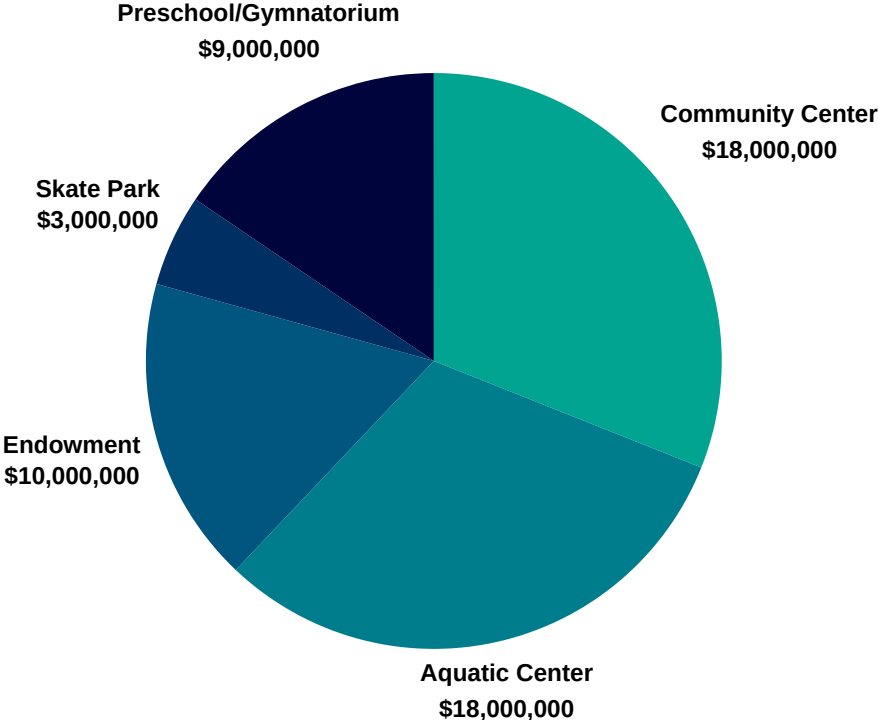
SECOND FLOOR



PROJECTED COSTS & PLANS

PHASE	DESCRIPTION	SQUARE FOOTAGE	PROJECTED COST
PHASE 1 (18 month build time)	YMCA Community Center Olympic Style Skate Park	34,000 sq. ft. 27,000 sq. ft.	\$18 million \$3 million
PHASE 2 (12 month build time)	Preschool/Gymnatorium	26,000 sq. ft.	\$9 million
ENDOWMENT	Endowment to Secure Financial Success		\$10 million
PALM BEACH COUNTY INVESTMENT	Full Scale Aquatic Center	60,000 sq. ft.	\$18 million
TOTAL PROJECT COST			\$58 million

Community Investment



PROGRAMMATIC

ENHANCEMENT & EXPANSION

RESPONDING TO COMMUNITY ISSUES THROUGH IMPACTFUL PROGRAMS

New challenges facing Palm Beach County create a greater need than ever before for the work the Y does every day. The Y believes true and lasting change can only occur when we invest in our children, our health, and our neighbors. The Y addresses community challenges by focusing on three areas: Youth Development, Healthy Living, and Social Responsibility.

YOUTH DEVELOPMENT

All children and teens deserve the opportunity to grow and thrive so they can focus and achieve their future goals under the guidance of adults who care about them and believe in their potential. We see every interaction with young people as an opportunity for learning and development. A primary focus of the new Y will be on teen programming and helping teens to navigate the difficult social landscape and challenges they encounter.

Key Programs and Features:

After School Care | Early Childhood Education | Progressive Teen Outreach Center
Summer Day Camp | Youth Sports | Drowning Prevention | Teen Mentoring | Visual Art Classes
Music Recording Studio | Skateboarding | College Preparation | Job Training

HEALTHY LIVING

At the Y, we focus on improving the personal well-being of all age groups for enhanced quality of living. Health and well-being are all about balance. This is why we help people of all ages achieve their individual health goals and bring their families closer together. We give people the knowledge, tools, inspiration, and support to stay active, eat healthy, and prevent or manage chronic diseases. We also provide them opportunities to connect with others and get involved in their communities. It all adds up to greater health and well-being in spirit, mind, and body.

Key Programs and Features:

State-of-the-Art Fitness Equipment | Group Exercise Classes | Community Health Seminars
Blood Pressure Management | Diabetes Awareness | Arthritis Management
Senior Classes | Community Teaching Kitchen | Mental Health Awareness | Counseling

SOCIAL RESPONSIBILITY

At the Y, we focus on giving back and providing support to our neighbors. With our doors open to all, we work every day to bridge the gaps that divide people in Palm Beach County, bringing our cause to the people and neighborhoods that need us most. With our members, volunteers, staff, and partners, we work to inspire a spirit of service in each interaction. From children to seniors, we help people embrace their responsibility to their communities and identify ways to strengthen our communities by offering programs that serve everyone.

Key Programs and Features:

Energy Efficient Facility | Community Trainings | Volunteer Opportunities
Space for Community Partner Agencies | Community Meeting Room
Environmental Stewardship Education

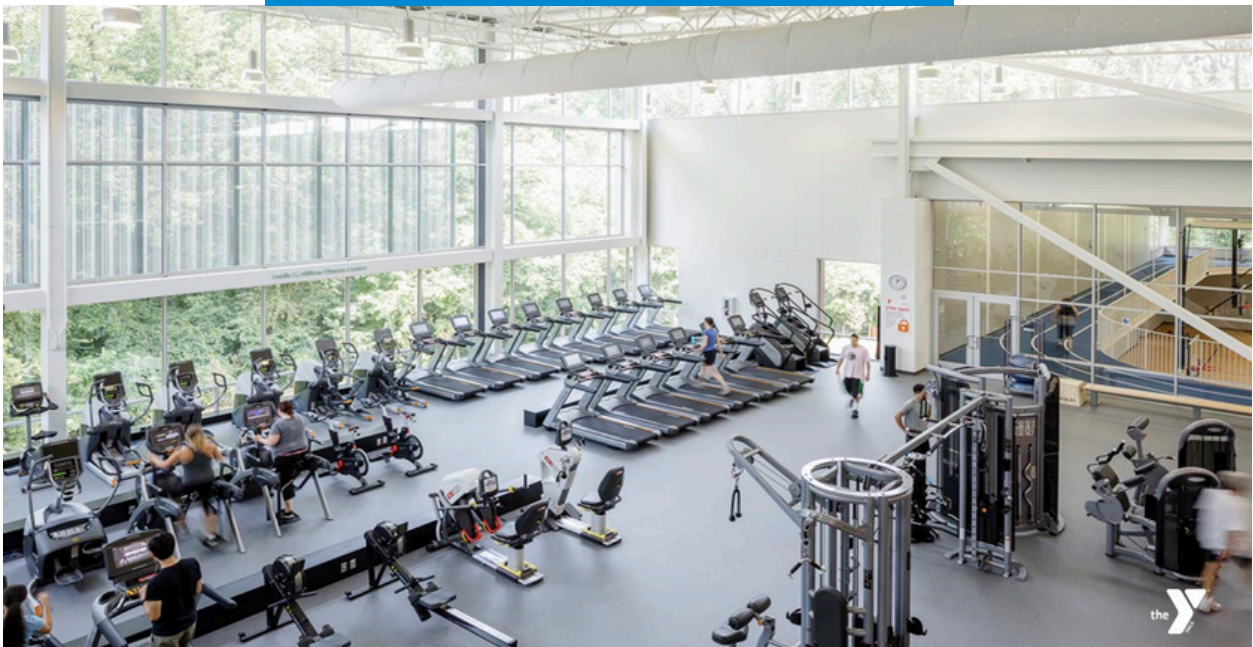


CONCEPTUAL RENDERINGS

Interior Spine



Wellness Center



CONCEPTUAL RENDERINGS

Fitness Studio



PBC Aquatic Center



CONCEPTUAL RENDERINGS

Olympic-Style Skate Park



Teen Center



CONCEPTUAL RENDERINGS

Music Recording Studio



Visual Art Studio



STEM Lab



NAMING OPPORTUNITIES

Community Center	\$10 million
Youth Engagement and Resource Center	\$3 million
The Y Preschool Academy	\$3 million
Wellness Center	\$3 million
Gymnasium	\$2.5 million
Fitness Center	\$2.5 million
Community Room	\$1 million
Large Outdoor Event Venue	\$1 million
STEM Lab	\$1 million
Outdoor Yoga Studio	\$1 million
Community Kitchen	\$1 million
Entry and Lobby	\$1 million
Recording Studio	\$750,000
Visual Arts Studio	\$750,000
Child Watch	\$500,000
Gymnasium - Basketball Court	\$500,000
Additional Naming Opportunities	\$100,000 to \$500,000

OUR LEADERSHIP & TEAM

YMCA CAMPAIGN LEADERSHIP COMMITTEE

Tim Coffield, YMCA CEO
Tim Leuliette, Board Chairman
Phil Cambo
John Di Donato
Callie Baker Holt
Thomas Hunt
Stephanie Langlais
Kathy Leone

The Campaign Leadership Committee meets on a monthly basis to discuss and set strategies for funding the campaign plan while working together to develop key relationships that are important to the organization's future success.



CAPITAL DEVELOPMENT PARTNERS

The YMCA of the Palm Beaches has partnered with the following corporations and government agencies for the development and planning of the new Flagship YMCA.

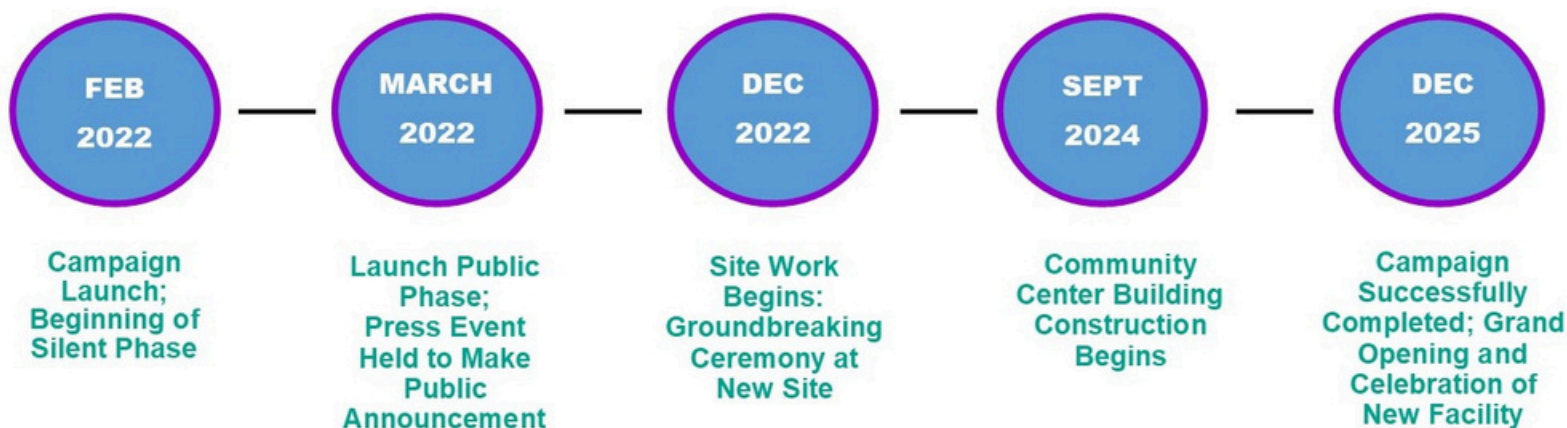


A YMCA FOR US

CAMPAIGN OVERVIEW & TIMELINE

YOU. ME. COMMUNITY. ALL.

The YMCA of the Palm Beaches is actively engaged in a capital campaign, seeking support from individuals, foundations, corporations, and community partners who are passionate about leaving a legacy in our community. With specific naming opportunities available, we encourage all to consider what a meaningful gift could look like for the thousands of families that will be impacted by this transformational and lifechanging project.



For more information on the campaign:
YMCA of the Palm Beaches
slanglais@ymcapalmbeaches.org
561-508-4028
ymcapalmbeaches.org